

Quick User Guide



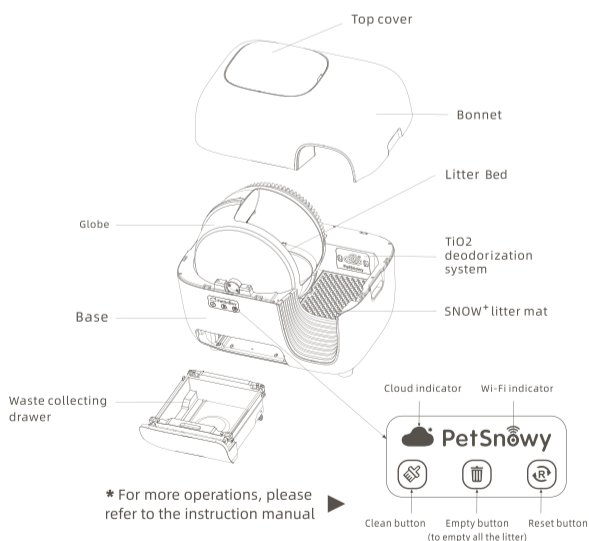
750 mm



Quick User Guide

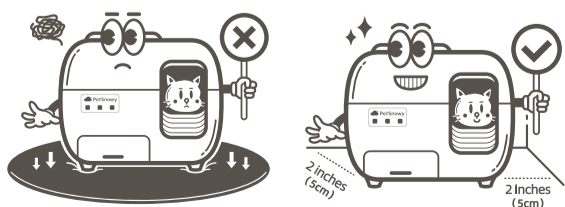
For SNOW+ Self-cleaning Litter Box / PS-001

Product Structure



Setting Up the Product for First Use

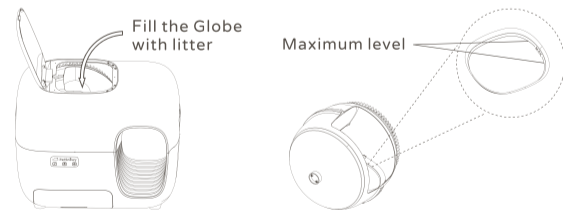
1. Open the package and take out the product carefully.
2. The product has a built-in gravity device. It must stand on a flat, hard floor, and be at least 2 inches (5cm) away from the wall.



3. Insert the power adapter's DC plug into the product's DC socket. Plug the power adapter into the power outlet. Once connected, the power indicator light will start flashing. Press the power button to initiate the self-check process, which takes approximately 2 minutes. After the self-check is complete, place the litter mat back into the litter box following the product structure diagram.

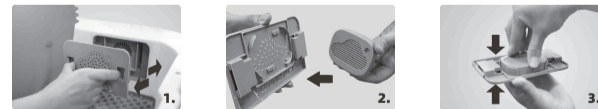


4. Open the top cover and fill the globe with litter. Do not exceed the maximum level of 5.7 lbs (2.6 kgs), or the excess will fall into the waste collecting drawer. Press the power button to reset the weight each time litter is added or changed. Do not press the power button when your cat is inside the litter box, or it may cause injury. The product is now ready for use; it will automatically clean itself after each time the cat uses the litter box.



Installing the Deodorizing Fragrance to the TiO2 Deodorization System

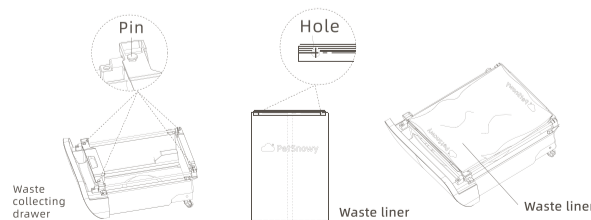
Remove the fragrance box from the litter box, where it attaches to the TiO2 system. Place the deodorizing fragrance into the fragrance box, then reinstall.



* Deodorizing fragrance is only for the litter box with TiO2 Deodorization System.

Replacing the Waste Liner

- Take the waste collecting drawer out from the litter box, then place the PetSnowy Waste liner into the waste collecting drawer.
- Hang the Waste liner by its four holes onto the four pins of the drawer. Stretch the Waste liner inside the drawer.
- For hygiene reasons, we recommend changing the waste liner every 3-4 days for a single cat. In hot, humid areas, longer intervals may attract insects.



How to Guide Your Cat in Using SNOW+ Litter Box

- 1 First, Determine Your Cat's Personality:

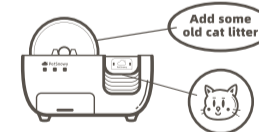


- 2 For extroverted and adventurous cats, you can guide the cat to use the enclosed cat litter box directly.
- 3 For introverted and shy cats, it is advised to start with an open box and gradually guide the cat to use the enclosed cat litter box.

*Guidance Methods for An Open Box

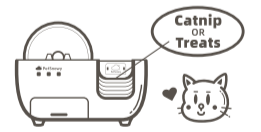
Method A:

Do not power on SNOW+ Self Cleaning Litter Box. Remove the bonnet and put SNOW+ in the original location of the old box. Pour in the litter taken from the old box and place your cat on the walkway. Let your cat familiarize itself with the transition and learn to use SNOW+.



Method B:

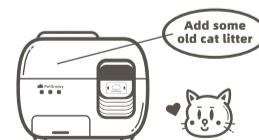
Do not power on SNOW+ Self Cleaning Box. Move it to an open area. Remove the bonnet without adding any cat litter. Put some catnip or treats on the walkway (near the litter mat) and let your cat explore by itself. There is no need to disturb your cat.



*Guidance Methods for An Enclosed Box

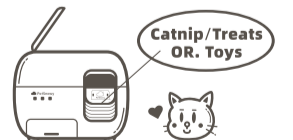
Method A:

Do not power on SNOW+ Self Cleaning Litter Box. Pour in the litter taken from the old box. Remove the bonnet and close the top cover. Place your cat near SNOW+ and let your cat familiarize itself with the transition and learn to use SNOW+.



Method B:

Do not power on SNOW+ Self Cleaning Litter Box. Do not remove the bonnet. Open the top cover and remove the curtain. Put some catnip or treats or your cat's favorite toys on the walkway and let your cat explore by itself first. There is no need to disturb your cat.



Got product questions?

Scan the code, Check FAQs!
Customer Service: support@petsnowy.com



Connecting the APP

- Use your mobile phone to scan the QR code to download the app or download "PetSnowy" from the App Store.
- Connect to Wi-Fi hotspot (2.4GHz) and turn on your mobile phone's Bluetooth.
- Press and hold the power button on the new litter box for 5 seconds until the Wi-Fi indicator light flashes. Follow the app's prompts to connect the device.



500 mm