

Thank you for choosing Petsnowy. To use this product correctly and safely, please read this instruction manual carefully and thoroughly before use and keep it for future reference. Failure to do so may result in injury to pets and/or damage to the product. Please note that Petsnowy is not responsible for any failure or damage caused by misuse, modification by anyone other than the Company, or improper installation or maintenance. Petsnowy reserves the right to interpret and modify this manual.



Table of Contents

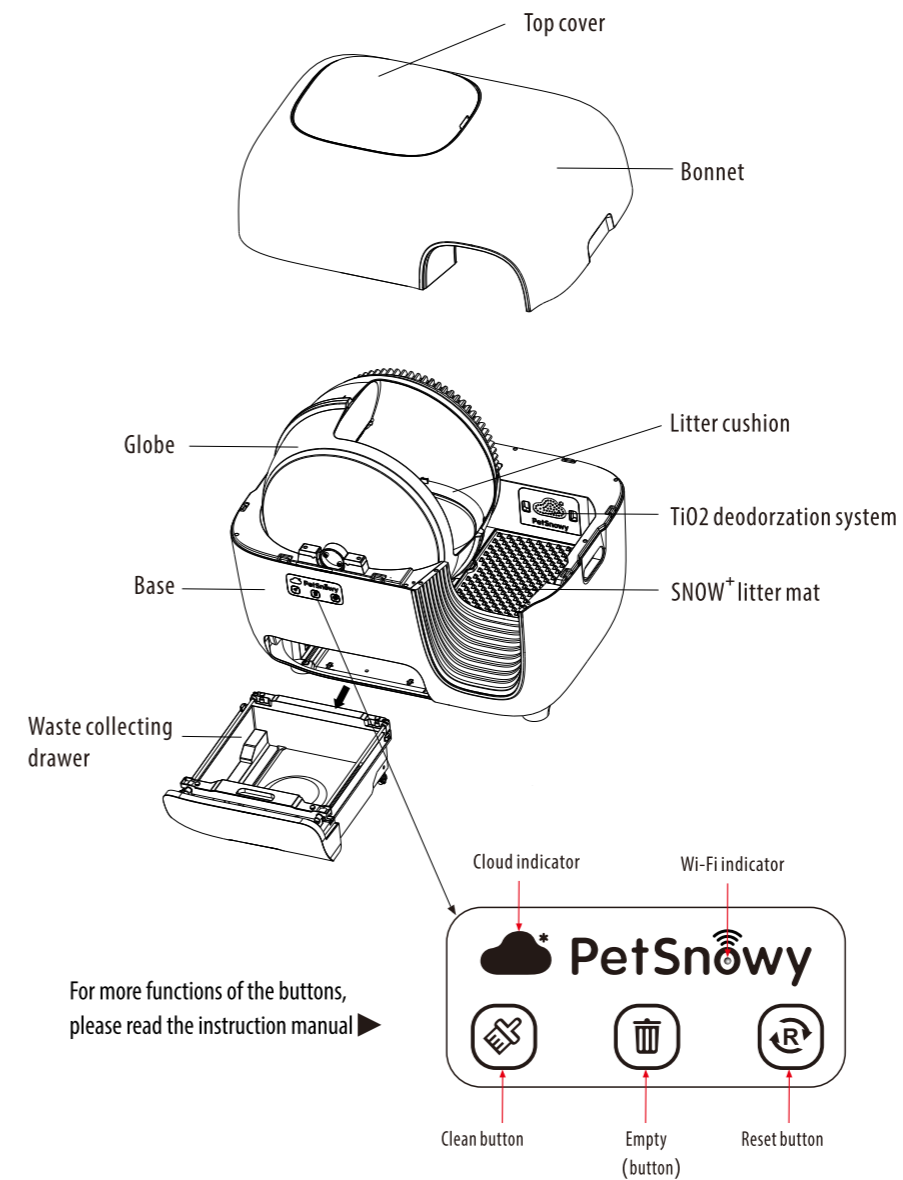
1. FEATURES	2
2. PRODUCT STRUCTURE	3
3. PREPARATION BEFORE USE	4
4. INTRODUCING YOUR CAT TO THE DEVICE	5
5. INSTALLING THE DEODORIZING FRAGRANCE*	6
6. APP DOWNLOAD AND ADDING THE DEVICE	6-13
7. FUNCTION INTRODUCTION	13-23
8. MAINTENANCE	24-27
9. INDICATOR LIGHTING AND SOLUTION	28
10. NOTES	29
11. FCC STATEMENT	30
12. IC WARNING	30
13. TECHNICAL SPECIFICATIONS	31
14. WARRANTY CARD	31

* Only for the version with the Deodorizing Fragrance Box.

FEATURES

- **Safe**
This product has multiple protections to ensure your cat's safety.
- **Zero* odor**
Multiple stages to eliminate odor: self-sealing trash bag, anti-odor interior structure, deodorizing fragrance specified for cat waste, Tio2 deodorizing system, DIY curtain
- **Professional deodorizing fragrance***
With its patented molecular technology and chemical neutralization method, the deodorizing fragrance removes cat waste odors while releasing a refreshing scent.
- **Intelligent**
Clean with just one button. Monitor usage with the app. Remote control via mobile application makes pet care easier.
- **Full waste drawer reminders**
Infrared detection device reminds you to clean the drawer.
- **Do-Not-Disturb mode**
Enable DND mode to pause product cleaning for 8 hours, ensuring an undisturbed sleep.
- **Curved walkway**
Thoughtfully designed curved walkway prevents cats from tracking out litter.
- **Easy assembly/disassembly and convenient washing**
Disassembling the bonnet, globe, waste collecting drawer, and litter cushion for cleaning is simple.
- **Toppo-resistant with a stable center of gravity**
Streamlined design and downward center of gravity ensure stability.
- **Patented Design**
Patented waste collecting drawer with four holes for easy installation.
- **Super large space**
The giant interior space fits even fat cats. The large waste collecting drawer allows for one cleaning every two weeks.
- **DIY curtain**
DIY personal curtain, easy change for cleaning, attractive and deodorizing.

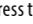
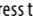
PRODUCT STRUCTURE

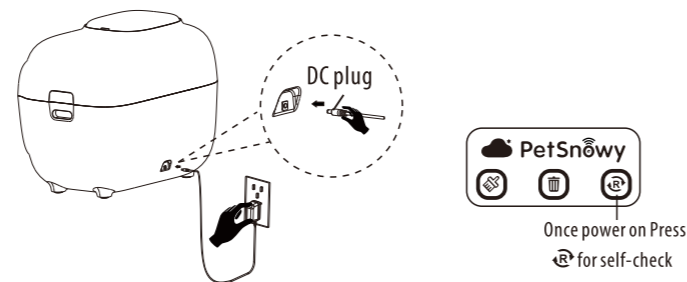



PREPARATION BEFORE USE

1. Open the package and take out the product carefully.
2. The product has a built-in gravity device. It must be placed on a flat, hard floor and be at least 2inch away from the wall.

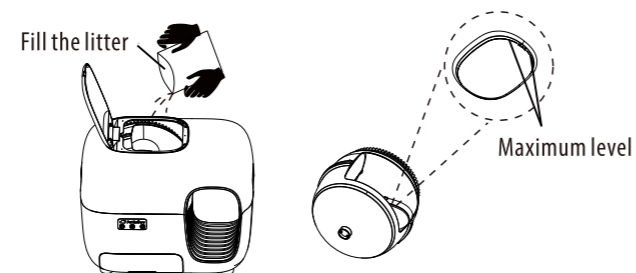


3. Insert the power adapter's DC plug into the product's DC socket. Plug the power adapter into the power outlet. Once connected, the  button indicator light will start flashing. Press the  button to initiate the self-check process, which takes approximately 2 minutes. After the self-check is complete, place the litter mat back into the litter box following the product structure diagram.



4. Open the top cover and fill the globe with litter. Do not exceed the maximum level of 5.7 lbs(2.6 kgs), or the excess will fall into the waste collecting drawer. Press the Reset button  to reset the weight. The product is now ready; it will clean the litter box after each use.

▲ Attention: Press the Reset button  each time litter is added or changed. Do not press  when your cat is inside the litter box, or it may cause injury.



INTRODUCING YOUR CAT TO THE DEVICE

Most cats can quickly adapt to the new litter box. For those cats that cannot make the transition quickly, here are some suggestions:

1. Place the new litter box close to the old litter box, leaving the old box in its original position. Add a scoop of litter from the old box to the new one to provide a familiar scent for your cat. Curious cats will start exploring the new litter box within a day or two.
2. If your cat shows no interest in the new litter box, entice it to approach using catnip or a favorite treat. Place treats on the step or around the new litter box, guiding your cat to associate rewards with the product.
3. Consider using a litter specially formulated for litter box training.
4. Aside from a training litter, avoid changing the brand or type of litter the cat is used to. Unfamiliar litter will cause anxiety and resistance to the new litter box.
5. For extremely timid cats, cut the product's power in the beginning and allow your cat to get used to the product step by step.
6. If your cat is sensitive to fragrance, delay installation of the deodorizing fragrance until after your cat has gotten used to the new litter box.*
7. If your cat dislikes the sound of the fan, turn off the deodorization function via the app or remove the fan. Re-start the fan/deodorization function after your cat has gotten used to the new litter box.
8. If your cat continues to use the old litter box, let them go as long as possible without cleaning the old box. As cats prefer a clean box, the dirty litter may persuade them to try the new, clean litter box.
9. Once the cat starts using the new litter box, remove the old one immediately.

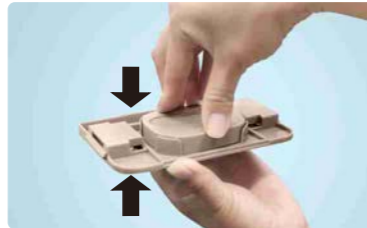
INSTALLING THE DEODORIZING FRAGRANCE *

If your cat is comfortable with this litter box, you can try installing the deodorizing fragrance.

1. Remove the deodorizing fragrance box from the litter box.



2. Place the fragrance in the box, then reattach the fragrance-filled box to the litter box.

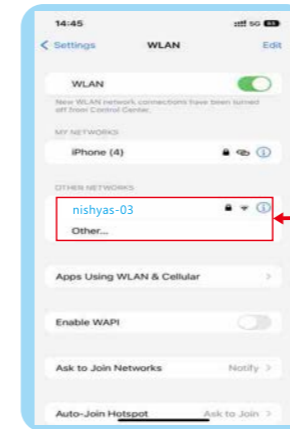


DOWNLOADING APP AND ADDING THE DEVICE

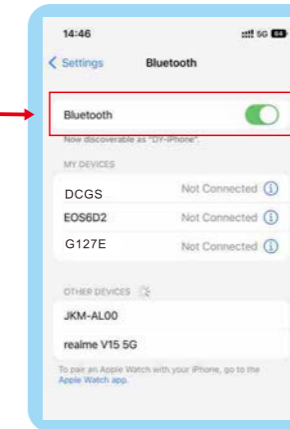
1. Download the "PetSnowy" app from the App Store or Google Play and install, or scan the QR code to download and install the app.



2. Connect your mobile phone to a Wi-Fi hotspot and turn on Bluetooth.

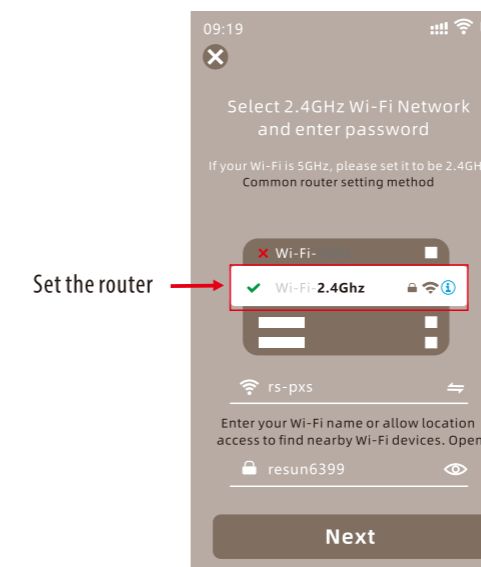


Turn on Bluetooth of your mobile phone

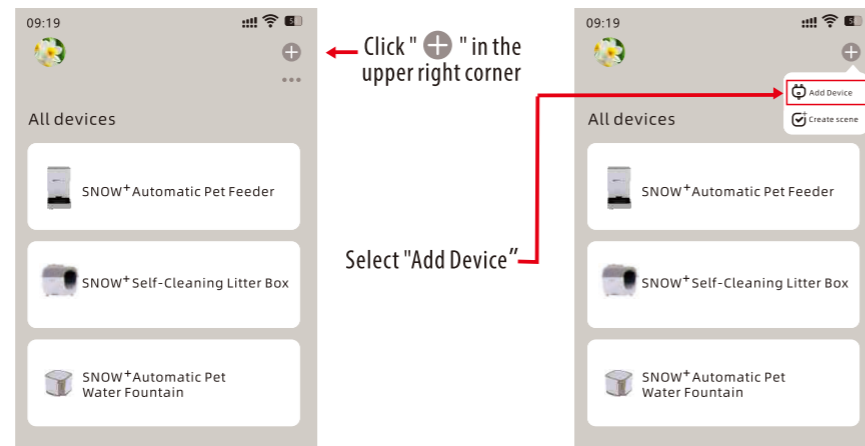


Connect your phone to a Wi-Fi hotspot

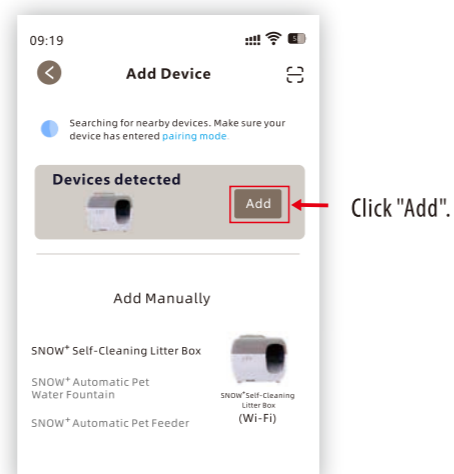
3. To connect the device for the first time, place it as close to the router as possible. (This device is only compatible with 2.4 GHz networks. Select the 2.4 GHz Wi-Fi connection if the router has both 2.4 GHz and 5 GHz bands available.)



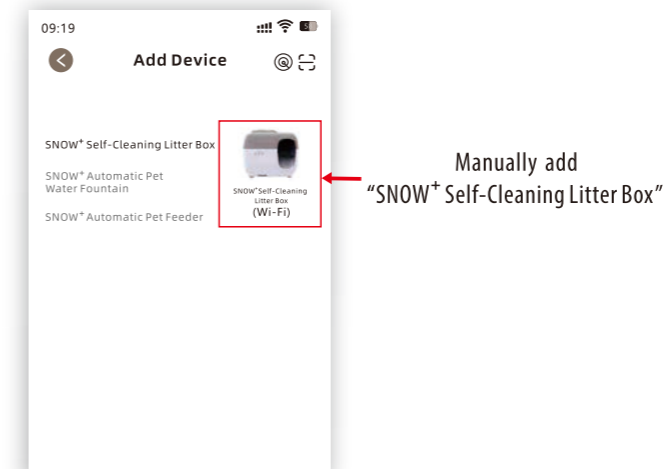
4. Open the app and click "+" in the upper right corner of the device list to add the device.



5. If smart devices nearby have been detected, select "SNOW+ Self-Cleaning Litter Box" from the device list and follow the app instructions to connect the device.



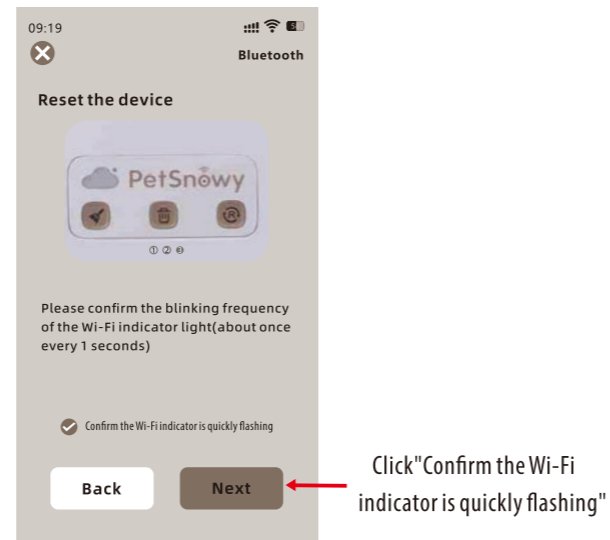
5-1. If the device has not been detected, select "SNOW+ Self-Cleaning Litter Box" manually and add the device according to the app instructions.



5-2. Press and hold the Reset button  on the device until the Wi-Fi indicator light flashes.



5-3. Click "Confirm the indicator is blinking rapidly" and then click "Next."

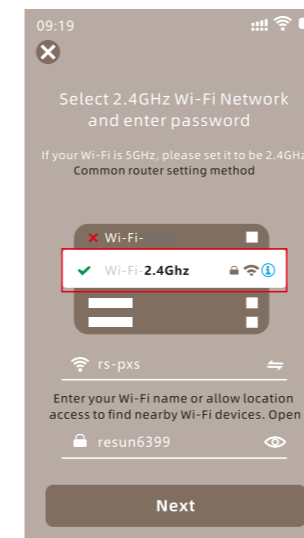


5-4. Select the pairing mode according to the Wi-Fi indicator light's blinking frequency.
Note: The default pairing mode is Bluetooth (Wi-Fi indicator light flashes quickly). Long-press the Wi-Fi connection button on the device to switch to AP mode (Wi-Fi indicator light flashes slowly) or EZ mode (Wi-Fi indicator light flashes quickly).

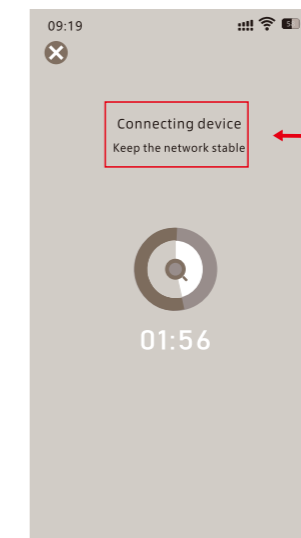


5-5. Confirm the hotspot and enter the password, then click "Next."

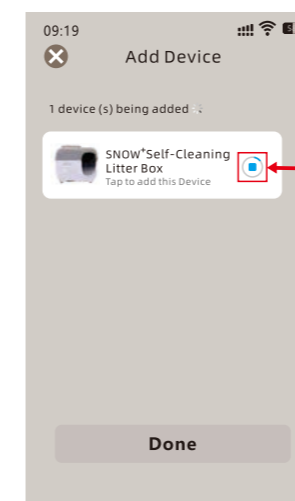
5-6. After the app connects to the device automatically, click "Connecting device"; after the device is added successfully, click "Done" in the upper right corner.



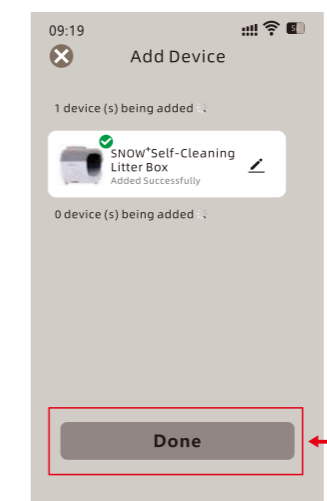
Click "Next"



Automatic connection

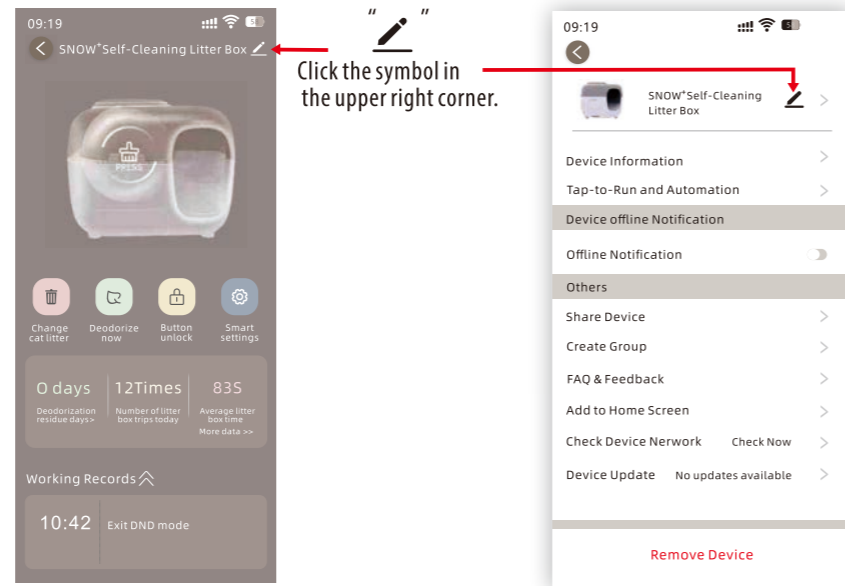


Click "Done"



Click "Done" in the upper right corner

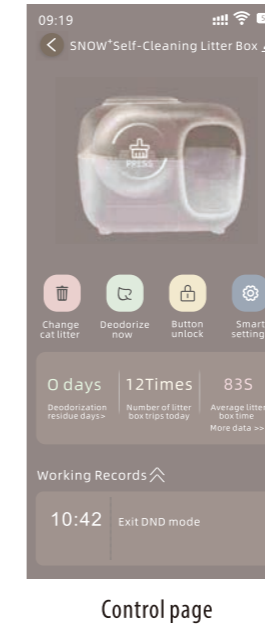
- 6. If adding the device fails, add the device again according to the possible causes the app prompts.
- 7. Name the new litter box in the app.
- 7-1. Click "✎" in the upper right corner.



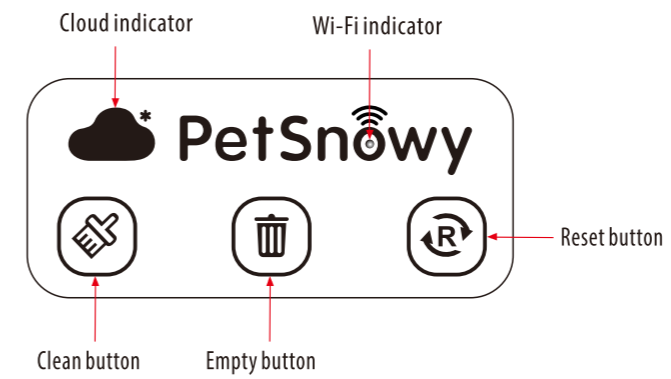
- 7-2. Rename the litter box and save it.



- 8. On the home page, select "SNOW* Self-Cleaning Litter Box" from the device list. Go to the Control Page to set the device to perform Immediate Cleaning, Changing Cat Litter, and Deodorizing. There are more functions to discover in the app.



FUNCTION INTRODUCTION



1. 🧹 Clean Button

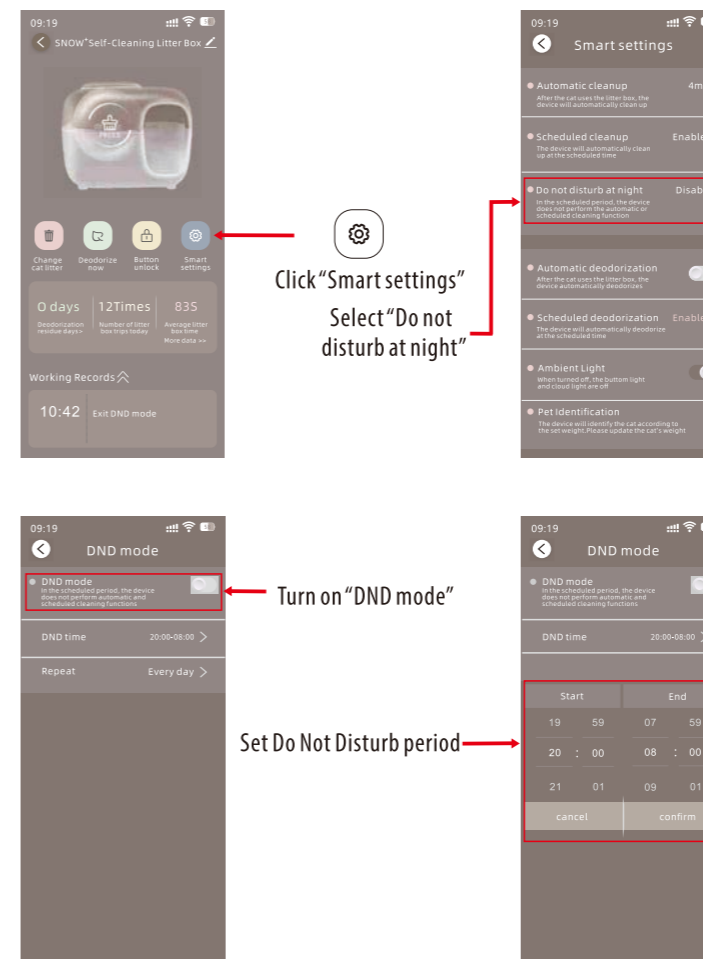
One short press to do cleaning.

- Press any button to pause the cleaning.
- Press the Clean button 🧹 again to continue the cleaning.
- Press Empty button 🗑️ or Rest button 🛋️ to cancel the cleaning.
- The Press button 🖱️ in the app and the Clean button 🧹 on the device have the same function.



DND Mode:

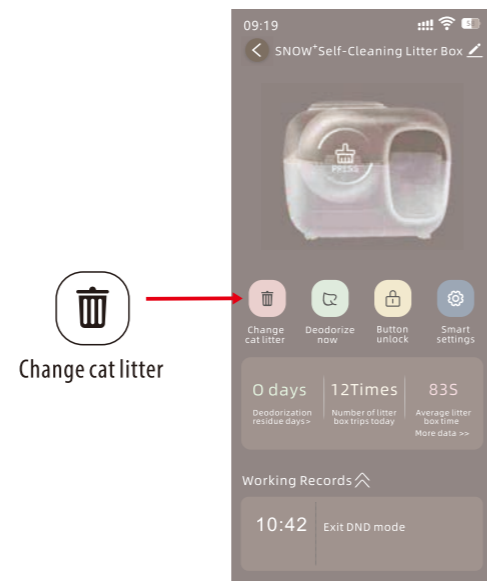
- Press the Clean button 🧹 for 3 seconds until the cloud indicator light alternately flashes red and green slowly to enable DND mode. The product will pause cleaning for the next 8 hours, then resume normal function to enable automatic cleanup. The device automatically enters the "8-DND mode" at the same time each day.
- To exit DND mode, press the Clean button 🧹 for more than 3 seconds until the cloud indicator light keeps flashing red and green alternately.
- DND mode is ideal for devices placed in the bedroom or when you need some quiet time.
- You can set the "DND period" in the app.



2. 🗑️ Empty Button for Changing Cat Litter

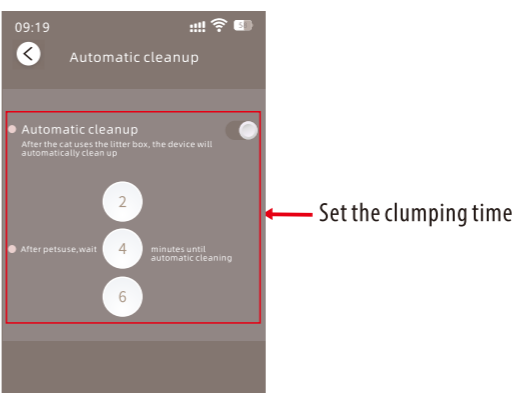
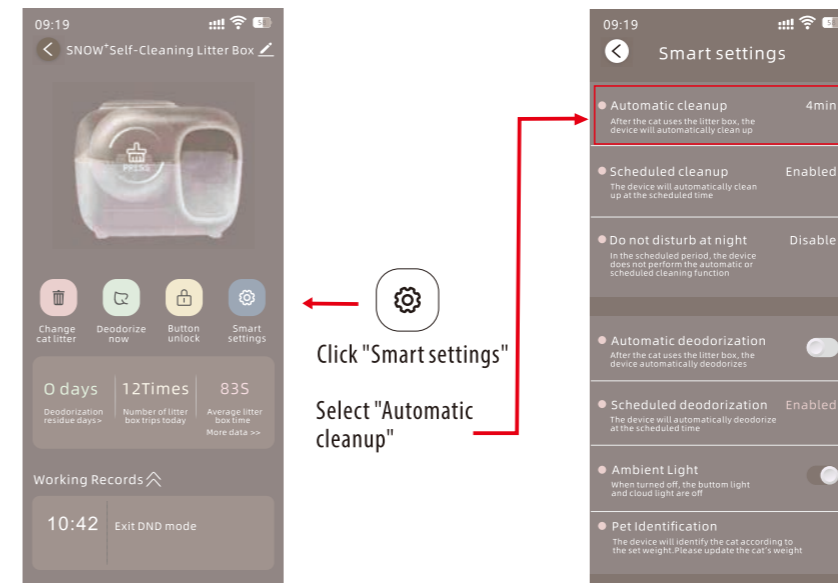
One short press to dump all the litter into the waste collecting drawer

- Press any button to stop the dumping.
- In the app, you can perform the same function by clicking "Change cat litter."



Press and hold the Empty button for more than 3 seconds to set the clumping time of the litter:

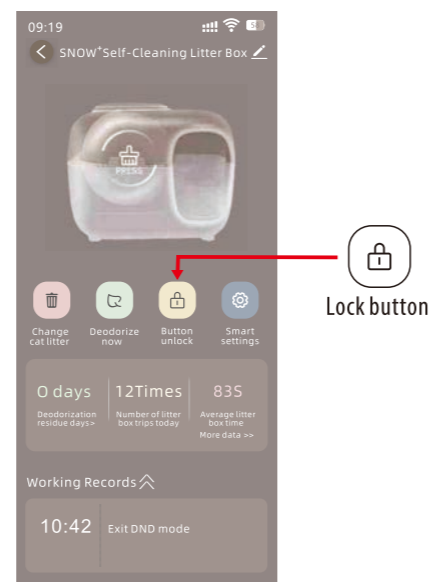
- Long-press the Empty button 🗑️ to select the clumping time. There are three options. The cloud indicator flashes white for 4-minute clumping, green for 8-minute clumping, and blue for 16-minute clumping.
- After your cat uses the litter box, the device starts the automatic cleaning after the chosen clumping time.
- Set other clumping times in the app.



3. Lock Mode

To enter the Lock mode, press and hold the Cleaning button and Empty button at the same time for more than 3 seconds until three indicator lights flash.

- After the Lock mode is enabled, all the buttons are locked and no function can be triggered by pressing the buttons. This function is a good solution for those cats that like playing with the buttons.
- To exist the Lock mode, press and hold the Clean button and Empty button at the same time for more than 3 seconds until three indicator lights flash.
- You can also enable the Lock mode by clicking "Lock button" in the app.



4. Reset Button

One short press to reset the weight of the litter.

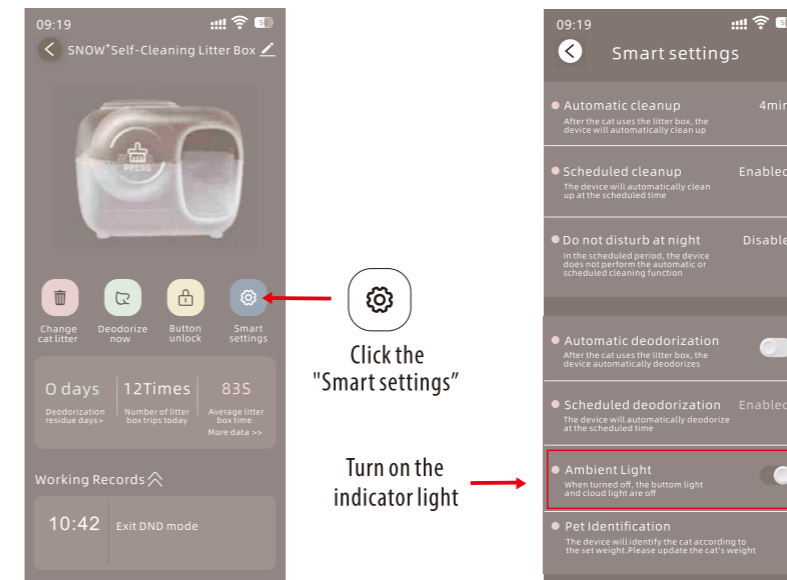
- Remember to press the Rest button every time the cat litter is filled, or the device will mistake the filling as a cat entering the device, causing it to stop running.
- If the cloud indicator light keeps flashing blue and green alternately, please check if your cat is inside the device. If your cat is not inside the device, please press the Reset button again to reset the weight.
- If the cloud indicator light still keeps flashing blue and green alternately, cut off the power, then connect the power again to restart the product.

Press and hold the Reset button for more than 5 seconds to add the device in the app.

5. Turn Off the Indicator Light

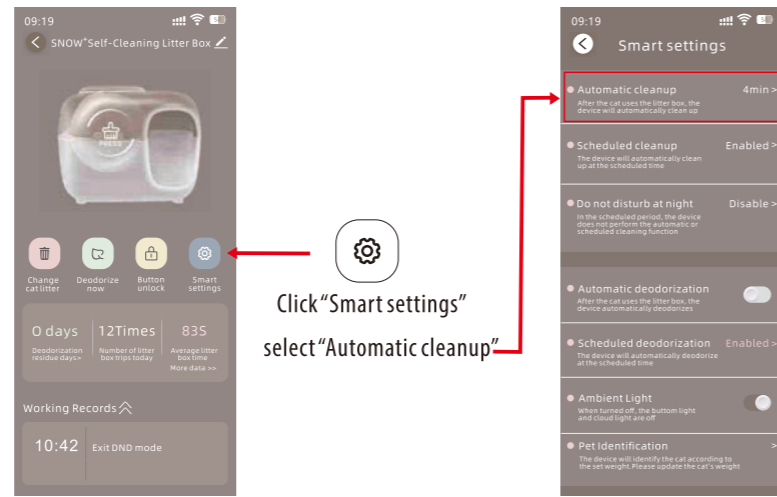
Press and hold the Empty button and Reset button at the same time for more than 3 seconds to turn off the cloud indicator light and three button indicator lights.

- Repeat the same operation to turn on the cloud indicator light and three button indicator lights.
- You can turn on/off all the indicator lights via the app.

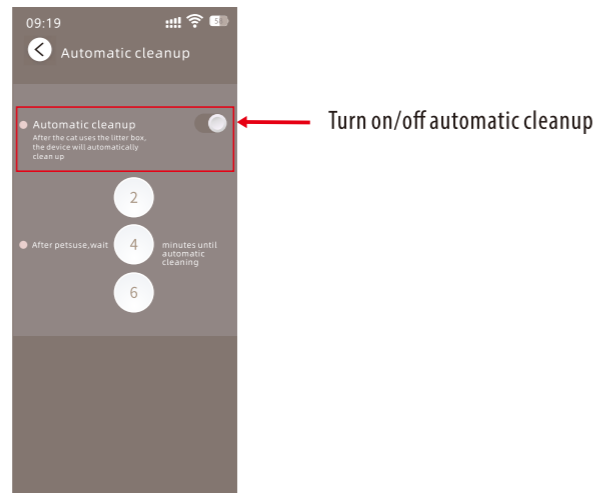


6. Automatic Cleanup

- Cleaning will be performed automatically after your cat uses the litter box and the litter clumps up.
 - ▲ This device is not suitable for cats under 6 months of age or weighing less than 3.3 lbs(1.5 kgs), as the device cannot operate properly and may injure your cat.
 - ▲ As a gravity sensor is located at the bottom of the device, it must be placed on a flat, hard floor, at least 2 inches(5 cm) away from the wall, or the cleaning function may not be properly performed.
- Automatic cleanup is a default setting. You can turn it off and on via the app.



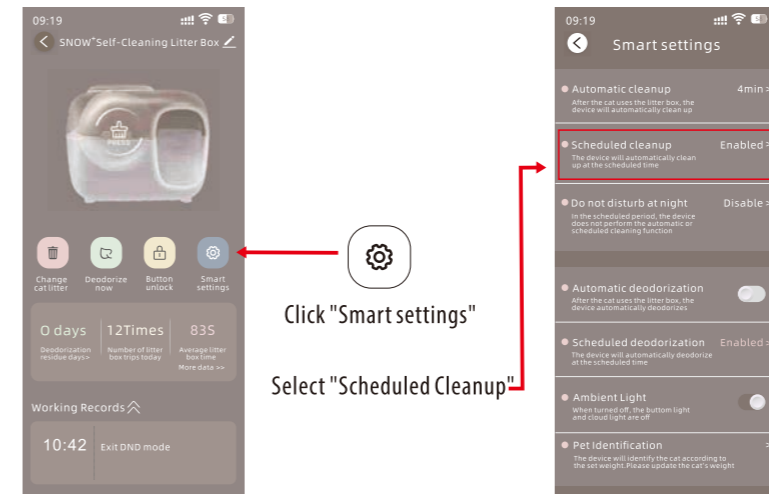
Click "Smart settings"
select "Automatic cleanup"



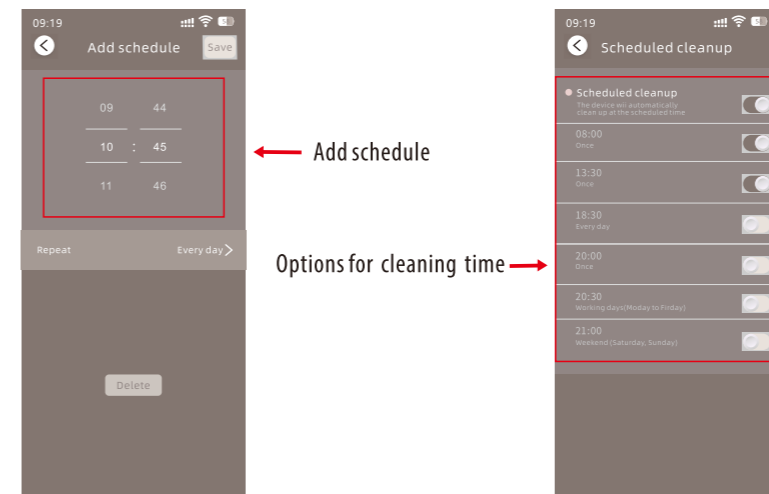
Turn on/off automatic cleanup

7. Set the Scheduled Cleanup

- Scheduled cleanup is disabled by default. It can be enabled via the app if needed.



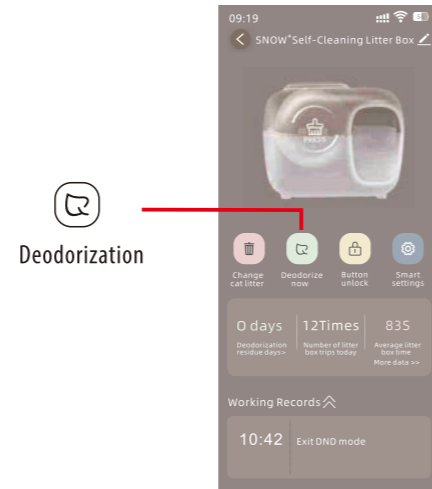
Click "Smart settings"
Select "Scheduled Cleanup"



Add schedule
Options for cleaning time

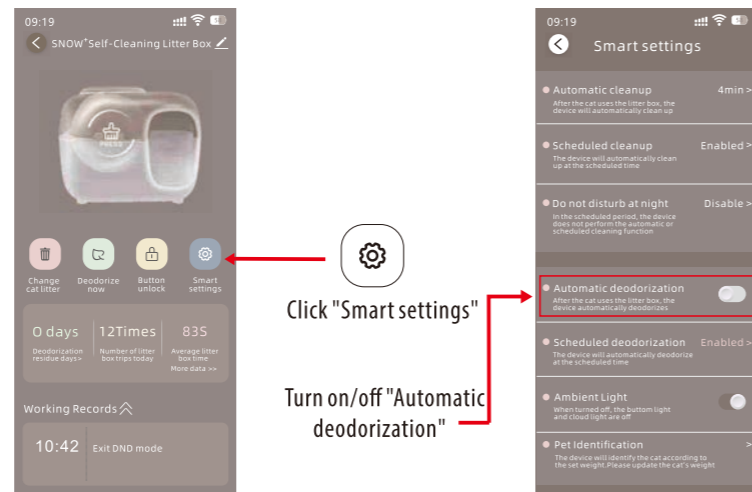
8. Deodorization Now*

- If the litter box is smelly, you can click "Deodorization now" in the app.



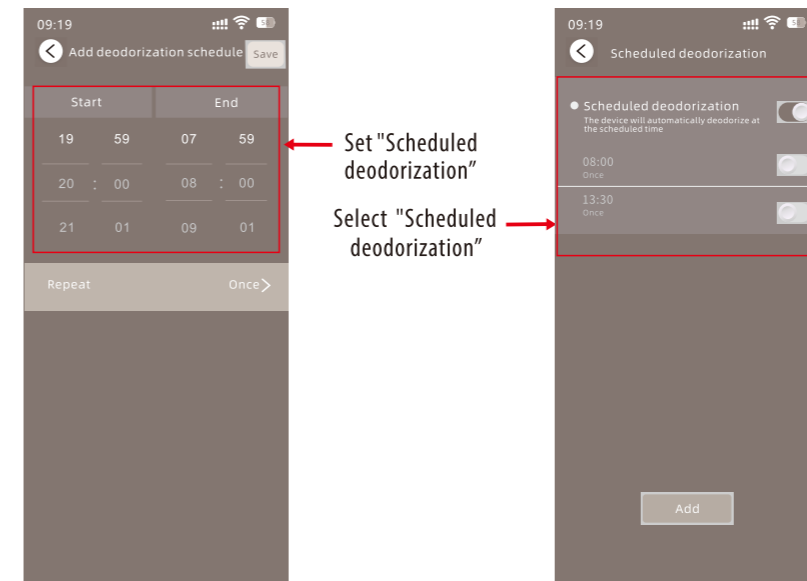
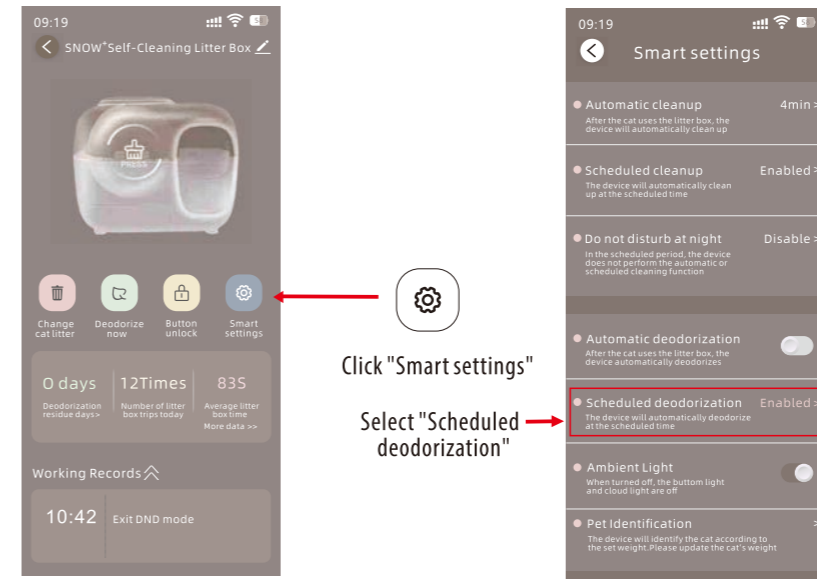
9. Automatic Deodorization*

- Automatic deodorization is enabled by default. After your cat uses the litter box, the function will start to work and continue until cleaning is complete.
- If your cat dislikes the sound of the fan, turn off the automatic deodorization function via the app.



10. Scheduled Deodorization*

- You can set scheduled deodorization to keep air fresh in the litter box via the app.



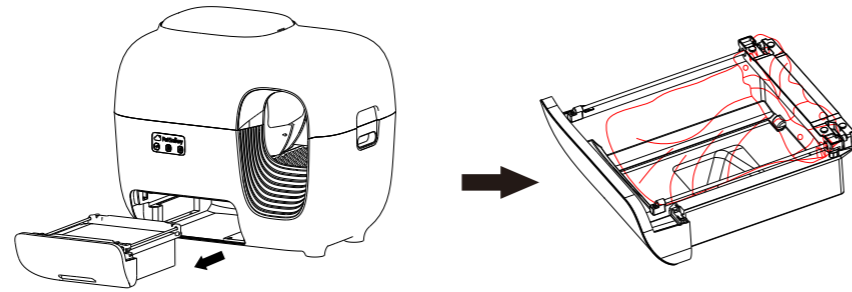
MAINTENANCE

1. Cleaning the waste collecting drawer:

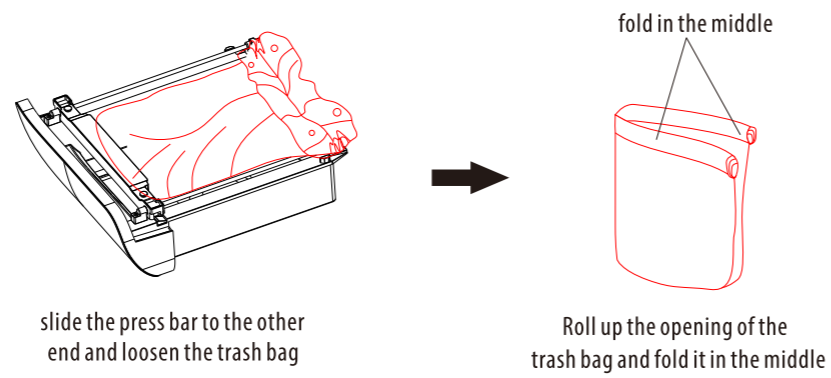
- How often you need to recommend the waste collecting drawer depends on your cat's use of the litter box. We recommend cleaning the waste collecting drawer at least once a week.
- Cat waste can attract flies, so cleaning the waste collecting drawer daily is ideal.
- ▲ **When the cloud indicator light keeps flashing red and green alternately, you must empty the waste collecting drawer, or the device will stop running.**

How to empty the waste collecting drawer:

- Pull out the waste collecting drawer, slide the press bar to the other end, and take out the trash bag.

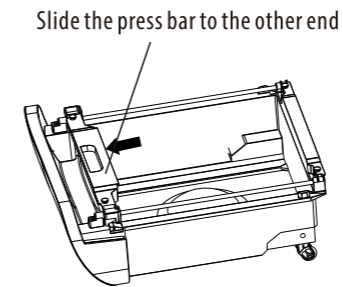


- Roll up the opening of the trash bag and fold it in the middle, then put it into the trash can.

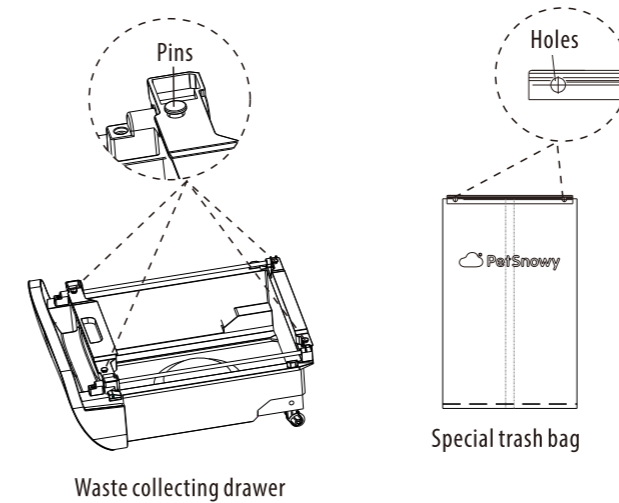


How to install the trash bag :

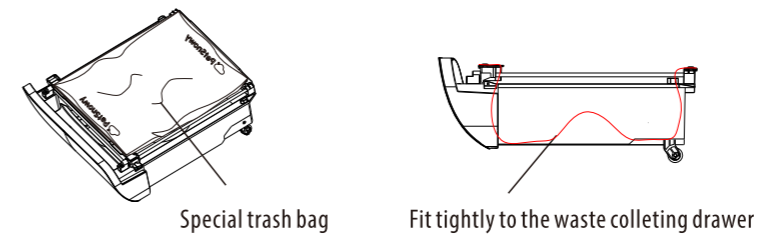
- Slide the press bar to the other end.



- Install the trash bag by hanging the four holes of the trash bag to the pins of the waste collecting drawer.



- Stretch the trash bag inside the drawer.



2. Adding the cat litter

- Please add cat litter regularly, corresponding to the reduced amount. For example, if two cats weighing 3 kg use the litter box, adding litter once a week is recommended.
- Be careful not to exceed the maximum amount of litter.
- Only clumping litter can be used with this product. For the best performance, use our PetSnowy litter. Non-clumping litter or litter that clumps poorly (absorbent non-clumping litter, paper litter, loose-clumping litter, absorbent wood pellet litter, etc.) are not suitable. Pearl litter and crystal litter are also suitable, but ensure the litter can go through the filter screen.

- ▲ **Always remember to press the Reset button  after every time litter is added, or the device will mistake the extra weight as a cat entering the device and cause it to stop running.**
- ▲ **If the cloud indicator light keeps flashing blue and green alternately, please check if your cat is inside the device. If your cat is not inside the device, press the Reset button  again to reset the weight, or cut off the power and reconnect to restart the device.**

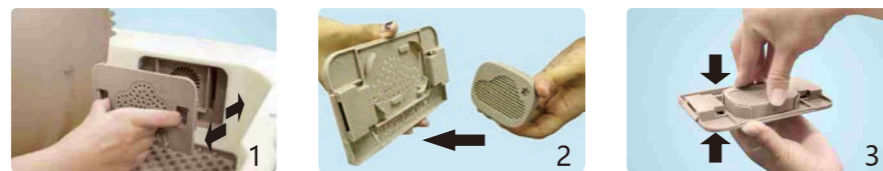


3. Cleaning the soft cushion

- If there is too much litter left over on the cushion, shake the litter into the globe.
- Rinse the cushion with water and dry it before placing it back in the litter box.

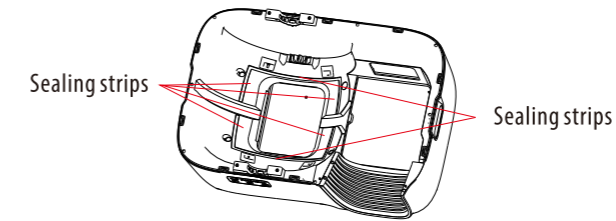
4. Replacing the deodorizing fragrance*

- Please replace the deodorizing fragrance regularly or when the device is smelly. We recommend replacing the deodorizing fragrance once a month.



5. Replacing the sealing strips:

- Sealing strips are used to contain odors within the waste collecting drawer. Replace the sealing strips promptly when they are worn flat or peeling up.



6. Cleaning the base

- Use a brush to sweep the litter in the base into the waste collecting drawer.

7. Cleaning the outer surface:

- After prolonged use, dust will accumulate on the device's surface. Wipe it off with a soft cloth dipped in warm, soapy water. Do not use abrasives or other organic solvents.
- Bonnet and waste collecting drawer do not contain electronic components, so they can be washed directly with warm, soapy water. However, abrasives or other organic solvents cannot be used. Dry after washing to prevent water from dripping into the base and damaging electronic parts or transmission mechanism.

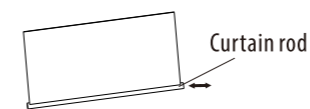
- ▲ **Warning: The base contains electronic components and the transmission mechanism, which cannot be washed with water. To clean, wipe with a soft, dry cloth.**

8. Replacing the curtain

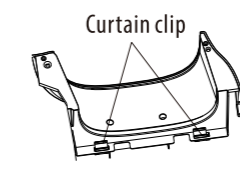
- Remove curtain from the hood.












- Take out the rod from the curtain and put it into the new curtain.



- Install the new curtain to the bonnet.



INDICATOR LIGHTING AND SOLUTIONS

Lighting	Indication	Solution
<p>1  Slow flash in blue and green</p>	<p>• The cat is inside the litter box • After litter is added</p>	<p>• Light will stop flashing after the cat leaves the litter box • Reset button  needs to be pressed to reset the weight</p>
<p>2  Quick flash in blue and green</p>	<p>• The cat stays in the litter box for a long time • The Reset button is not pressed after litter is added • The litter box is moved when it is powered on</p>	<p>• Take the cat out of the litter box • Press the Reset button  • Cut off the power, then reconnect the power to restart the product</p>
<p>3  Slow flash in red and green</p>	<p>• In DND mode</p>	<p>• Exit the DND mode, if needed</p>
<p>4  Quick flash in red and green</p>	<p>• The waste collecting drawer is full</p>	<p>• Clear and clean the drawer</p>
<p>5  Quick flash in red</p>	<p>• The bonnet or the waste collecting drawer is not installed correctly</p>	<p>• Install the bonnet or the drawer correctly</p>
<p>6  Quick flash in yellow</p>	<p>• Litter weight exceeds the maximum weight • Globe cannot rotate freely</p>	<p>• Reduce the litter, max 5.7 lbs(2.6 kgs) • Cut off the power and disassemble the bonnet and the globe to check if they are stuck. Make sure they are not stuck, then connect the power to restart the device.</p>
<p>7  Quick flash in red, green, and blue</p>	<p>• The globe did not go back to the home position</p>	<p>• Cut off the power, take off the bonnet, and check if the globe is properly installed or stuck. Connect the power to restart the device.</p>

NOTES

- Before use, please read and fully understand this manual.
- Keep the device away from high temperatures and humidity and direct sunlight. For indoor use only.
- This product must be placed on a flat, hard surface. Do not place it on soft or thick carpets, or uneven, unstable floor. Inappropriate surface may affect activation of the automatic mode, or lead to other unsafe factors.
- This device can only be used as a cat litter box, not for other purposes.
- No other objects can be placed on the device, nor can it be used as a stool.
- Fill the globe with clumping litter only. Non-clumping litter or litter that clumps poorly (absorbent non-clumping litter, paper litter, loose-clumping litter, absorbent wood pellet litter, etc.) cannot be used with this product.
- This device is not suitable for children to operate without adult supervision.
- This device is not suitable for cats under 6 months of age or weighing less than 1.5 kg, as the device may not work properly and may injure your cat.
- When moving the device, please lift the whole device. Do not drag the device on the ground to avoid damaging the weighing sensors at the bottom of the device.
- The globe, the bonnet and the waste cleaning drawer can be cleaned with water. After cleaning, water must be wiped off and fully dried before use. The base contains electronic parts and a transmission mechanism, hence it cannot be washed with water and cannot operate with water inside.
- When cleaning the surface of the device, please use a soft, damp cloth to wipe gently. Do not use abrasives, other organic solvents, or corrosive solvents.
- Please allow the cat to get used to the new litter box on its own. Do not force the cat into the globe.
- When the globe rotates, do not remove the bonnet, or put your hands or other objects into the device.
- When the globe is removed, do not turn on the device to prevent the rotating gear from causing injuries.
- Please keep pets away from biting the power cord of the adapter.
- This device cannot be repaired, modified, or taken apart by non-professionals.

DISCONNECT THE DEVICE FROM THE POWER SUPPLY BEFORE DOING ANY MAINTENANCE.

FCC STATEMENT

This device complies with Part 15 of the FCC Rules. Operation is subject to the following two conditions:

- (1) This device may not cause harmful interference, and
- (2) This device must accept any interference received, including interference that may cause undesired operation.

Warning: Changes or modifications not expressly approved by the party responsible for compliance could void the user's authority to operate the equipment.

NOTE: This equipment has been tested and found to comply with the limits for a Class B digital device, pursuant to Part 15 of the FCC Rules. These limits are designed to provide reasonable protection against harmful interference in a residential installation. This equipment generates uses and can radiate radio frequency energy and, if not installed and used in accordance with the instructions, may cause harmful interference to radio communications. However, there is no guarantee that interference will not occur in a particular installation. If this equipment does cause harmful interference to radio or television reception, which can be determined by turning the equipment off and on, the user is encouraged to try to correct the interference by one or more of the following measures:

Reorient or relocate the receiving antenna.

Increase the separation between the equipment and receiver.

Connect the equipment into an outlet on a circuit different from that to which the receiver is connected.

Consult the dealer or an experienced radio/TV technician for help.

FCC Radiation Exposure Statement:

This equipment complies with FCC radiation exposure limits set forth for an uncontrolled environment.

This equipment should be installed and operated with minimum distance 20cm between the radiator & your body.

IC WARNING

This device complies with Industry Canada's licence-exempt RSS standard(s). Operation is subject to the following two conditions:

- (1) this device may not cause interference, and
- (2) this device must accept any interference, including interference that may cause undesired operation of the device.

Le présent appareil est conforme aux CNR d'Industrie Canada applicables aux appareils radio exempts de licence. L'exploitation est autorisée aux deux conditions suivantes:

- (1) l'appareil ne doit pas produire de brouillage, et
- (2) l'utilisateur de l'appareil doit accepter tout brouillage radioélectrique subi, même si le brouillage est susceptible d'en compromettre le fonctionnement.

This Class B digital apparatus complies with Canadian ICES-003. Cet appareil numérique de la classe B est conforme à la norme NMB-003 du Canada.

IC RF Statement:

When using the product, maintain a distance of 20cm from the body to ensure compliance with RF exposure requirements.

TECHNICAL SPECIFICATIONS

Model	PS-001	Power Adapter	Input: 100-240VAC 50/60HZ
Product Name	SNOW ⁺ Self-Cleaning Litter Box		Output: DC 12V/1.5A
Use Environment	Indoors	Size	750*508*650mm

Warranty Card

Product _____

From which shop _____

Shop Address _____

Date of purchase _____ / _____ / _____

Shop signature _____

Purchaser signature _____

The product is warranted to be free of defects in manufacturing and material for one (1) year from the date of purchase. Please retain your dated original receipt or invoice as proof of purchase, and return the defective product to place of purchase. Please note that this warranty does not cover damage from accident, misuse or abuse. It also specifically excludes incidental or consequential damages like any loss of pets or other livestock as a result of any failure or defect of this product.